



LAKE HAVASU CITY, ARIZONA
ADMINISTRATIVE SERVICES DEPARTMENT
◆ PROCUREMENT ◆

REQUEST FOR PROPOSALS
NORTH REGIONAL WWTP AERATION SYSTEM REPLACEMENT
P25-PW-500583
ADDENDUM NO. 5
DECEMBER 6, 2024

Attention is called to the following changes, additions, clarifications and/or deletions to the original solicitation and they shall be considered in preparing submissions:

CHANGE IN THE OPENING DATE: *NEW PROPOSAL OPENING DATE IS DECEMBER 18, 2024.* There is no change in the opening time. **Submissions are due no later than 3:00 p.m., Arizona Time**, at the City Clerk's Office, 2330 McCulloch Blvd. N., Lake Havasu City, AZ 86403 or electronically via the City's DemandStar Network at <https://www.demandstar.com/app/buyers/bids/471661/details> .

If your proposal is already in transit, the City Clerk's Office will hold it for opening on the New Proposal Opening Date unless we are notified otherwise. If your proposal has already been electronically submitted via DemandStar, you do have access to make changes prior to the time of the opening. Proposer may then email a Receipt Confirmation to Purchasing@lhcaz.gov which will be placed with your proposal package.

ITEM ONE (1): CHANGE IN DUE DATE

The due date for this Request for Proposals (RFP) is hereby changed to Wednesday, December 18, 2024 at 3:00PM local Arizona time.

ITEM TWO (2): CHANGE IN QUESTION DUE DATE

As the due date for this RFP solicitation has been extended, the due date for questions has been extended to December 11, 2024 at 3:00PM local Arizona time.

ITEM THREE (3): QUESTIONS AND ANSWERS

Question 1: Will a bid bond be required and, if so, will a bid bond form be provided?

Answer 1: As this is an RFP we are not requiring a bid bond.

Question 2: What is the intended duration for the project?

Answer 2: The expected duration of the project is three (3) months.

Question 3: What is the engineer's estimate?

Answer 3: \$500,000

Question 4: Why is the City replacing the aerators now and what issues are driving the replacement?

Answer 4: The current system is at the end of its useful life and one symptom of that is the existing PVC piping is brittle and breaking apart.

Question 5: Relative to the pre-cleaning that will be performed by the City, will this include removing debris from the piping?

Answer 5: No.

Question 6: How were the identified temperatures of the space and waste determined?

Answer 6: From the original documents from when the plant was built.

Question 7: Can the City share the complete "as-built" plans?

Answer 7: Yes. They are Attachment A to this Addendum.

Question 8: The provided drawings reference documents that were not included in the original RFP package. Can the City provide the missing plumbing sheets?

Answer 8: See Answer 7.

Question 9: Has a performance hazard assessment been completed for the confined space?

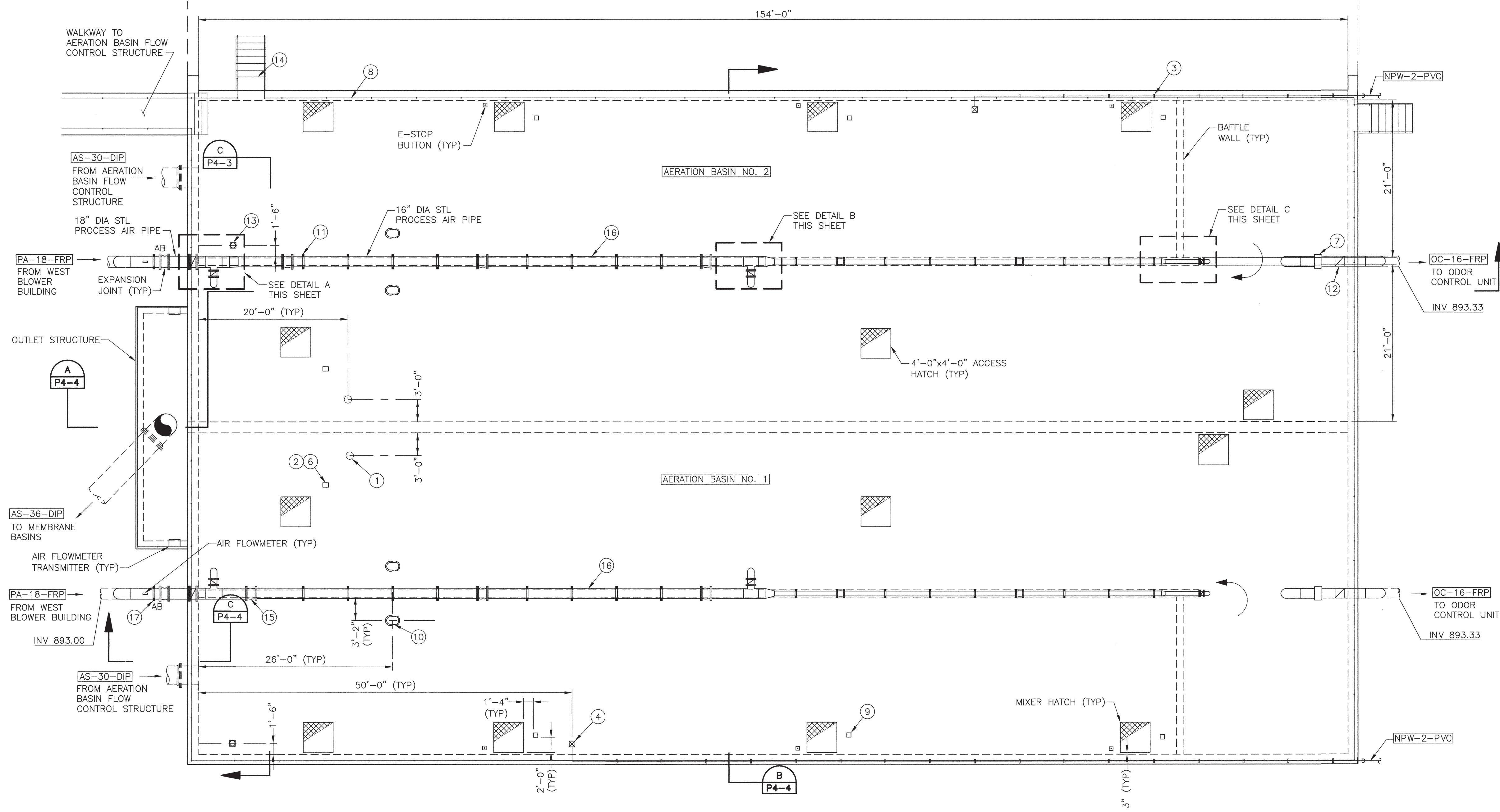
Answer 9: Yes.

Question 10: Will the City entertain an extension to allow review of any answers to the previous questions?

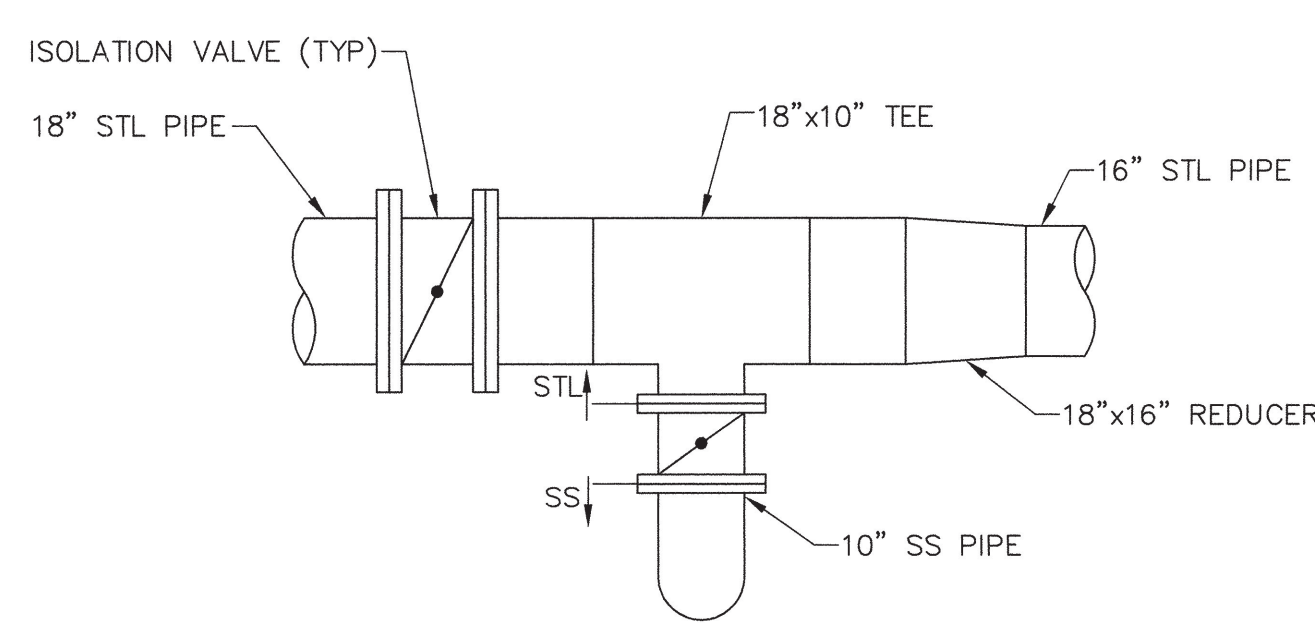
Answer 10: Yes. See Item One.

Andrew Klos, CPPB
Senior Procurement Specialist

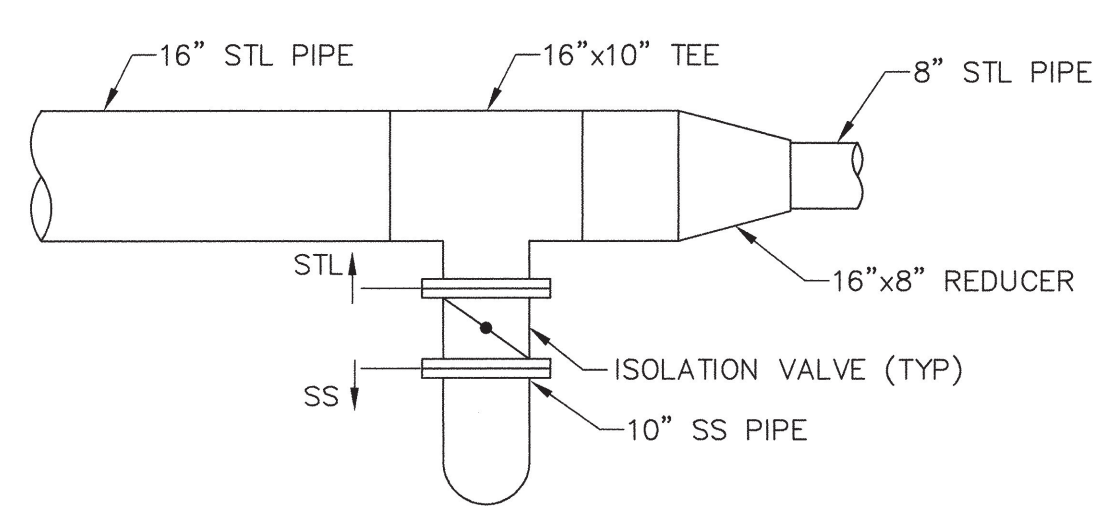
XREF: WTPPSITE, TB-X4001



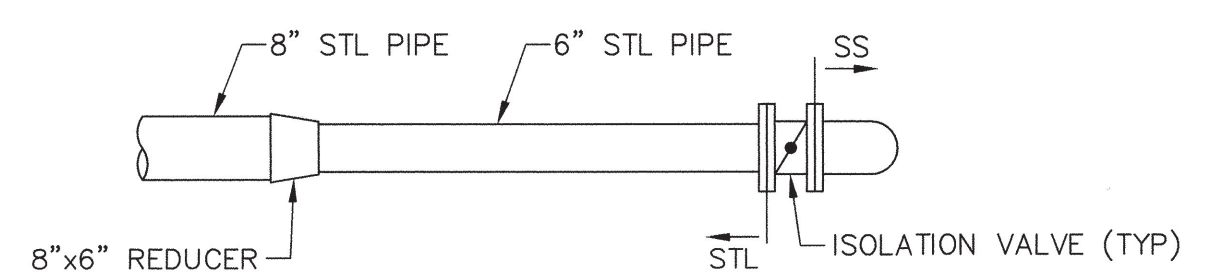
PLAN
SCALE: 1/8"=1'-0"



DETAIL A
NOT TO SCALE



DETAIL B
NOT TO SCALE



DETAIL C
NOT TO SCALE

KEYED NOTES

- 1 DISSOLVED OXYGEN PROBE (TYP)
- 2 DISSOLVED OXYGEN TRANSMITTER (TYP)
- 3 PIPE SUPPORT PER DETAIL 126 AT EVERY 6'-0" ON CENTER MAXIMUM (TYP)
- 4 FREE STANDING YARD HYDRANT PER DETAIL 120 (TYP)
- 5 NOT USED
- 6 MOUNT TRANSMITTER PER INSTRUMENTATION SHEET I-2 (TYP)
- 7 EPDM SLEEVE (TYP)
- 8 ALUMINUM HANDRAIL PER DETAIL 108
- 9 PEDESTAL BASE DAVIT CRANE MOUNT (TYP) CONTRACTOR TO VERIFY LOCATIONS OF DAVIT CRANE MOUNT WITH DAVIT CRANE MANUFACTURER, PRIOR TO INSTALLATION
- 10 10" DIA GOOSENECK AIR INTAKE PER DETAIL 111 (TYP)
- 11 PIPE SUPPORT PER DETAIL 117 (TYP) AT A SPACING OF 6'-0" CENTER TO CENTER (TYP)
- 12 DAMPER (TYP)
- 13 MUD VALVE PER DETAIL 144 (TYP)
- 14 STAIRS, SEE SPECIFICATION (TYP)
- 15 EXPANSION JOINT, MAXIMUM SPACING OF 20'-0" ON CENTER MAXIMUM (TYP)
- 16 EXPOSED AIR PIPING SHALL BE INSULATED PER SPECIFICATION
- 17 PIPE SUPPORT PER DETAIL 117 (TYP) AB

"AS-BUILT" DRAWINGS
This drawing was modified to reflect construction revisions based on the records kept and provided by the Contractor.

Finished as-built measurements and elevations were not obtained by the Engineer. All information reported must be verified by site measurements.

ENGINEER: *[Signature]*
DATE: 4/20/08

WILSON ENGINEERS, LLC
Phoenix, Arizona

In Association with
MALCOLM PIRNIE

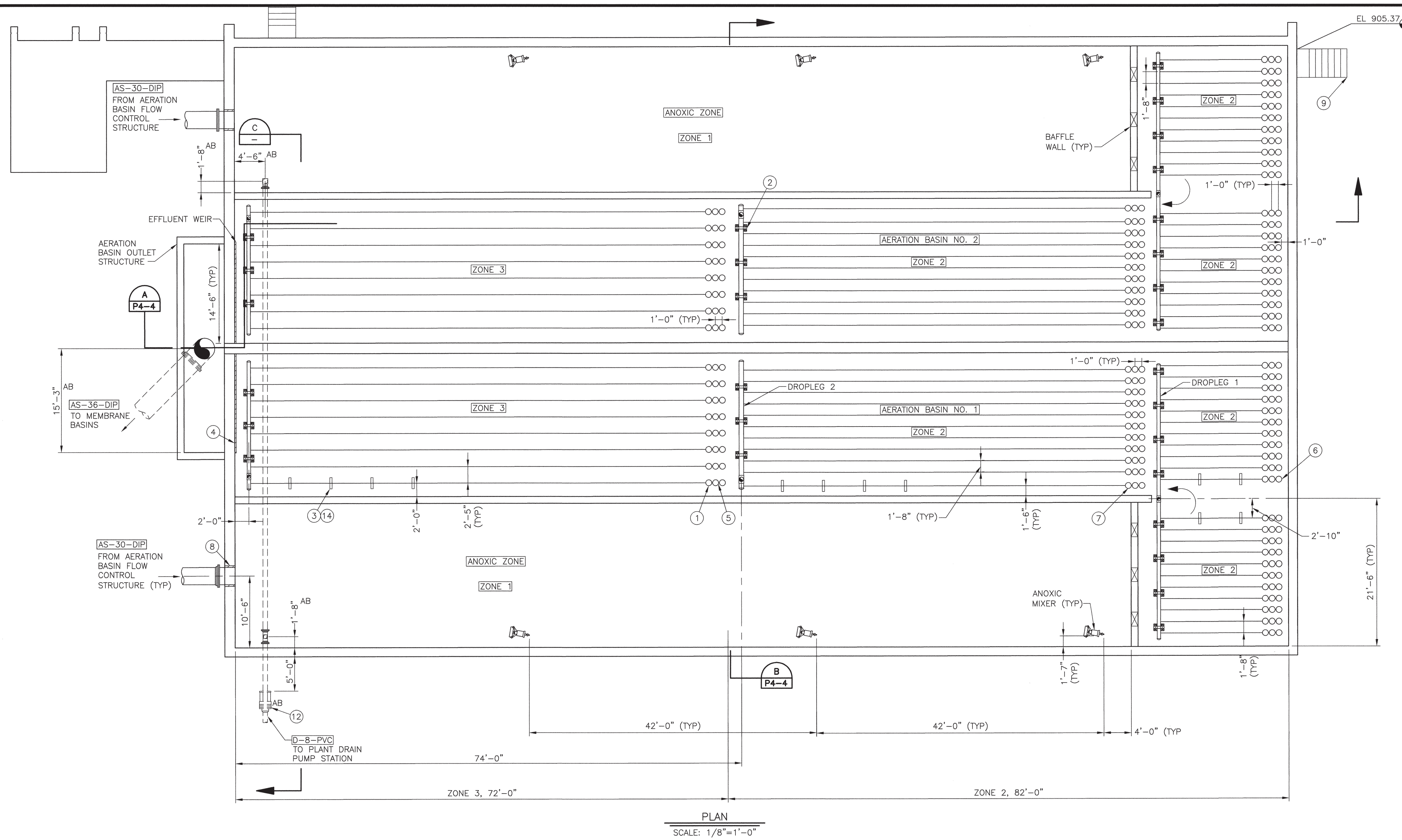
WILSON ENGINEERS
9633 South 48th Street, Suite 290
Phoenix, Arizona 85044-5658
Phone: (480) 893-8860

LAKE HAVASU CITY, ARIZONA
NORTH REGIONAL WASTEWATER TREATMENT PLANT
AERATION BASINS - UPPER PLAN
CITY PROJECT NO. SS1860
WCEA NO. X4001

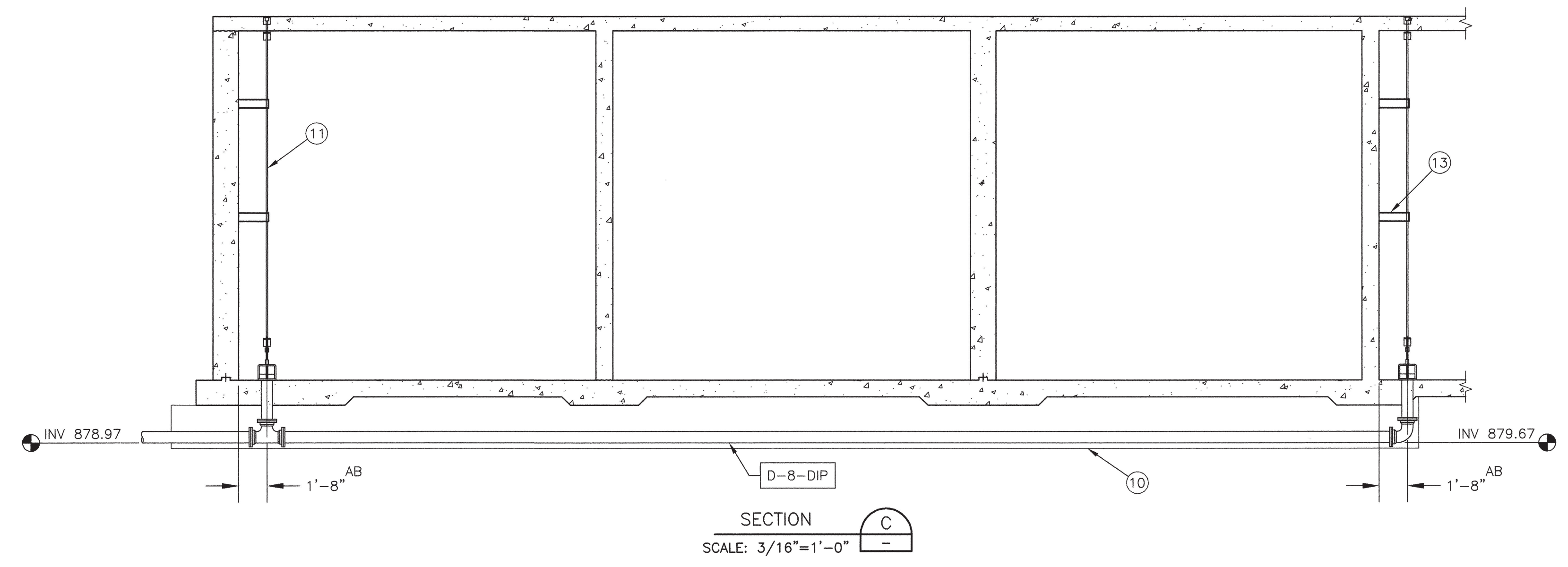
Design:	SY	Drawn:	KUG	Checked:	X4001
Date:	7/05	WCEA Project No.:	X4001	Description	AS-BUILT
Revision	Date	By	MIA		
	1-08				

THE ORIGINAL DESIGN DRAWING FOR THIS WORK WAS SEALED ON 7/5/2005 BY USAY K. GANDHI, A REGISTERED PROFESSIONAL CIVIL ENGINEER IN THE STATE OF ARIZONA, REGISTRATION NO. 30185

XREF: TB-X4001, WWTPSITE & WWTPPIPE



PLAN
SCALE: 1/8"=1'-0"



SECTION C
SCALE: 3/16"=1'-0"

KEYED NOTES

- 1 FINE BUBBLE MEMBRANE DIFFUSER (TYP)
- 2 CONCRETE PIPE SUPPORT PER DETAIL 3 SHEET S19-2 AT A SPACING OF 6'-0" ON CENTER MAX (TYP)
- 3 PIPE SUPPORTS FOR DIFFUSER LATERAL SHALL BE PROVIDED BY FINE BUBBLE DIFFUSERS MANUFACTURER (TYP), ALL PIPE SUPPORTS FOR LATERALS NOT SHOWN FOR CLARITY
- 4 FRP WEIR PER DETAIL 115
- 5 ZONE 3 DIFFUSER LAYOUT PER BASIN NO. OF LATERALS = 8 DIFFUSERS PER LATERAL = 70 TOTAL NUMBER OF DIFFUSERS = 560
- 6 ZONE 2 (DROPLEG 1) DIFFUSER LAYOUT PER BASIN NO. OF LATERALS = 22 DIFFUSERS PER LATERAL = 17 TOTAL NUMBER OF DIFFUSERS = 374
- 7 ZONE 2 (DROPLEG 2) DIFFUSER LAYOUT PER BASIN NO. OF LATERALS = 11 DIFFUSERS PER LATERAL = 58 TOTAL NUMBER OF DIFFUSERS = 638
- 8 PE x MJ WALL PENETRATION PER DETAIL 101 (TYP)
- 9 STAIRS, SEE SPECIFICATION (TYP)
- 10 CONTRACTOR TO GROUT FILL DRAIN LINE TRENCH
- 11 MUD VALVE INSTALLATION PER DETAIL 144 (TYP)
- 12 DIP TO PVC ADAPTER
- 13 INTERMEDIATE GUIDE BRACKET MOUNTED TO CONCRETE WALL (TYP)
- 14 SEE SPECIFICATIONS FOR FURTHER INFORMATION ON SUPPORTS AND EXPANSION JOINTS FOR DIFFUSER PIPING

"AS-BUILT" DRAWINGS
This drawing was modified to reflect construction revisions based on the records kept and provided by the Contractor.

Finished as-built measurements and elevations were not obtained by the Engineer. All information reported must be verified by site measurements.
ENGINEER: *[Signature]*
DATE: 4/20/08
WILSON ENGINEERS, LLC
Phoenix, Arizona

In Association with
MALCOLM PIRNIE

WILSON ENGINEERS
9633 South 48th Street, Suite 290
Phoenix, Arizona 85044-5658
Phone: (480) 893-8860

LAKE HAVASU CITY, ARIZONA
NORTH REGIONAL WASTEWATER TREATMENT PLANT
AERATION BASINS - LOWER PLAN
CITY PROJECT NO. SS1860
WCEA NO. X4001

Design:	SY	Drawn:	FH	Checked:
Date:	7/05	WCEA	Project No.:	X4001
Revision:	1/08		Description:	AS-BUILT
			By:	MLA

THE ORIGINAL DESIGN DRAWING FOR THIS WORK WAS SEALED ON 7/5/2005 BY UDAY K. GANDHE, A REGISTERED PROFESSIONAL CIVIL ENGINEER IN THE STATE OF ARIZONA, REGISTRATION NO. 30185

KEYED NOTES

- ① FINE BUBBLE DIFFUSER HEADS
- ② SUPPORTS FOR AIR DISTRIBUTION LATERALS TO BE PROVIDED BY FINE BUBBLE DIFFUSER MANUFACTURER
- ③ PIPE PENETRATION PER DETAIL 105 (TYP)
- ④ MIXER INSTALLATION PER DETAIL 136 (TYP)
- ⑤ PIPE SUPPORTS PER DETAIL 126 AT A DISTANCE OF 6'-0" CENTER TO CENTER (TYP)
- ⑥ SS TO PVC TRANSITION COUPLING (TYP)
- ⑦ PE x MJ PIPE PENETRATION PER DETAIL 101 (TYP)
- ⑧ PIPE SUPPORT PER DETAIL 117^{AB}

In Association with
MALCOLM PIRNIE

WILSON ENGINEERS
9633 South 48th Street, Suite 290
Phoenix, Arizona 85044-5658
Phone: (480) 893-8860

LAKE HAVASU CITY, ARIZONA
NORTH REGIONAL WASTEWATER TREATMENT PLANT
AERATION BASINS - SECTIONS
CITY PROJECT NO. SS1860
WCEA NO. X4001

Design:	SY	Drawn:	FH	Checked:	
Date:	7/05	WCEA Project No.:	X4001		
Revision:		Description:	AS-BUILT	By:	MLA
		Date:	1/08		

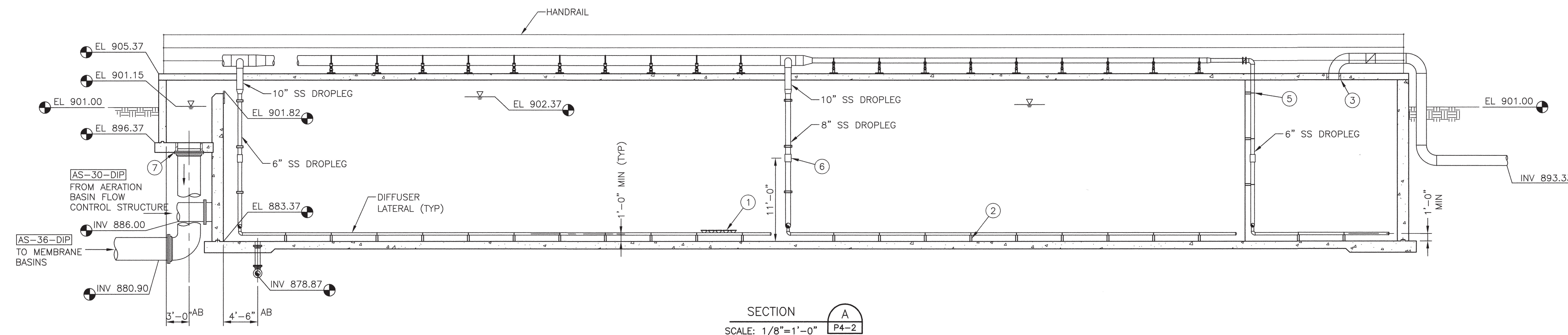
THE ORIGINAL DESIGN DRAWING FOR THIS WORK WAS SEALED ON 7/5/2005 BY UDAY K. GANDHE, A REGISTERED PROFESSIONAL CIVIL ENGINEER IN THE STATE OF ARIZONA, REGISTRATION NO. 30185

Sheet No. **P4-4**

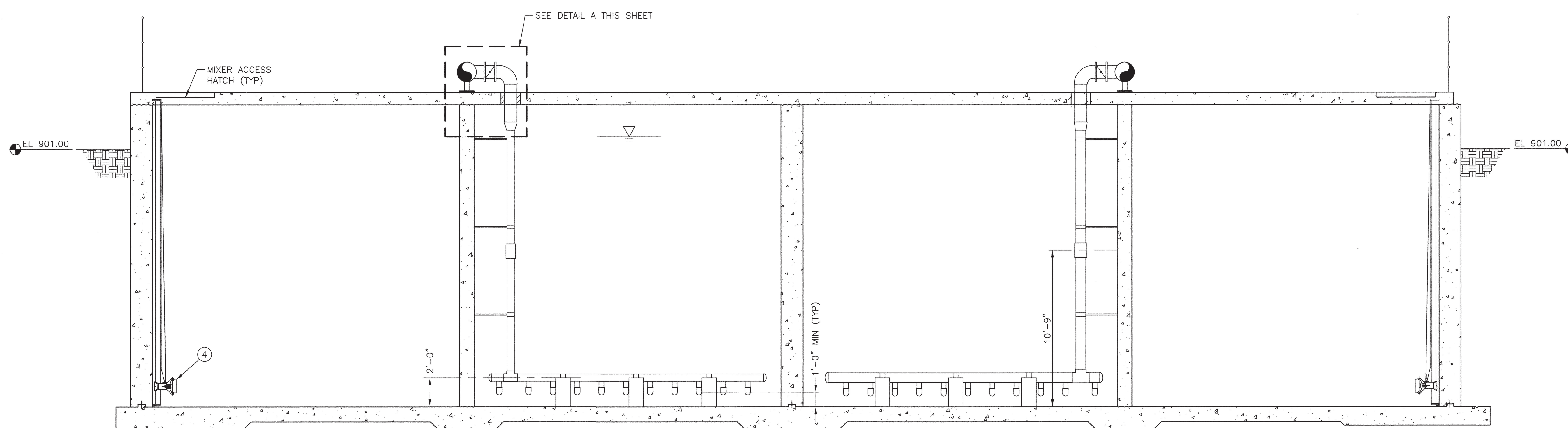
"AS-BUILT" DRAWINGS
This drawing was modified to reflect construction revisions based on the records kept and provided by the Contractor.

Finished as-built measurements and elevations were not obtained by the Engineer. All information reported must be verified by site measurements.

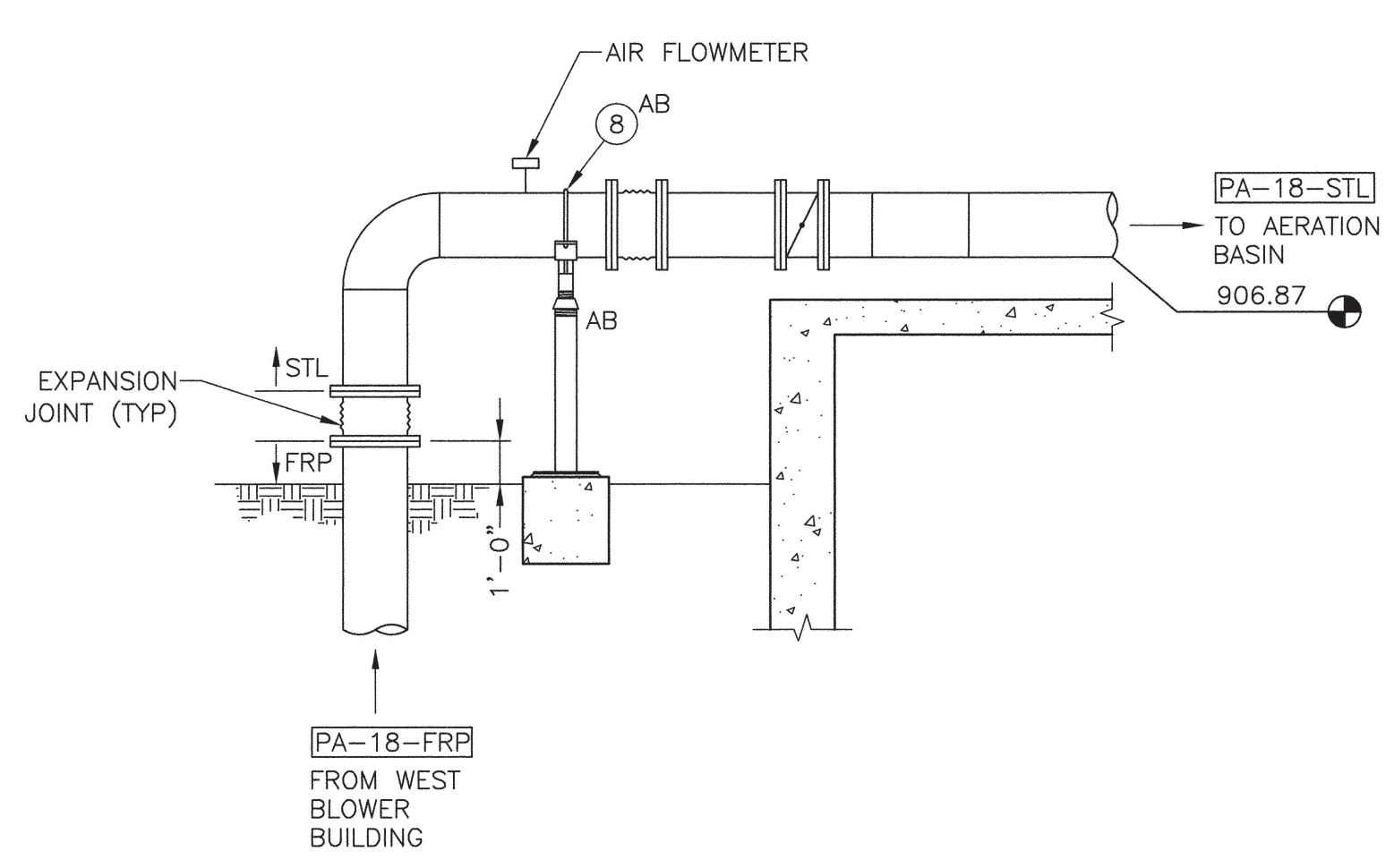
ENGINEER: *[Signature]*
DATE: 4/20/08
WILSON ENGINEERS, LLC
Phoenix, Arizona



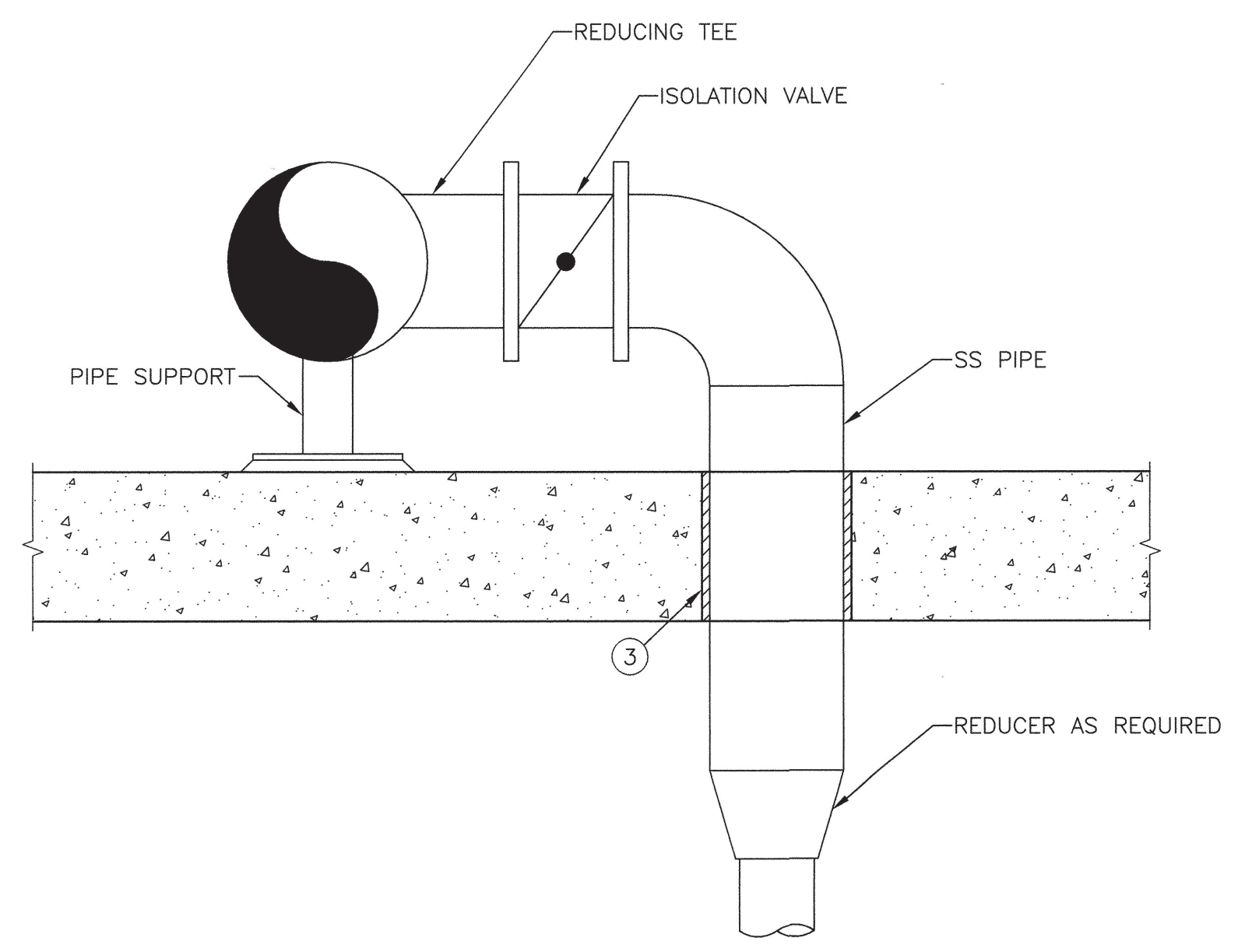
SECTION **A**
SCALE: 1/8"=1'-0"
P4-2



SECTION **B**
SCALE: 1/4"=1'-0"
P4-2



SECTION **C**
SCALE: 1/4"=1'-0"
P4-2



DETAIL **A**
NOT TO SCALE

XREF: TB-X4001, 4001D010, 4001D011, 4001D043 & 4001D178