

NOTE. CLEAR ACCESS FOR ROUTINE MAINTENANCE MUST BE PROVIDED ALL AROUND SCREEN. ANY ACCESS LADDERS OR PLATFORMS REQUIRED NOT EWT SUPPLY.

EQUIPMENT WEIGHTS & LOADINGS DETAILS	
HI-FLOW SCREEN-DRY	4200 Lbs
HI-FLOW SCREEN-WITH WATER	6700 Lbs
SIZE 3. WASHING TANK - DRY	3360 Lbs
SIZE 3. WASHING TANK - WITH WATER	8960 Lbs
SIZE Ø500 COMPACTOR - DRY. (2 OFF.)	4500 Lbs
SIZE Ø500 COMPACTOR - WITH WATER. (2 OFF.)	8960 Lbs

TOTAL WASH WATER INPUT TO WASHPACKET TO BE NO LESS THAN 95 G.P.M. MAX. 200 G.P.M.

COMPACTOR WASHWATER SOLENOID VALVE (LIMIT OF EWT SUPPLY) 120V, 1PH, 60Hz ELECTRIC SUPPLY 1" NPT FEMALE CONNECTION WATER REQUIREMENT 16 G.P.M. @ 25 P.S.I.. WATER QUALITY TO BE FINAL EFFLUENT OR BETTER. (WATER CONNECTION BY EWT)

4 HOLES Ø $\frac{3}{4}$ " FOR EACH SCREEN SUITABLE FOR Ø $\frac{3}{8}$ " ANCHOR FIXINGS HOLES FOR ANCHORS TO BE DRILLED ON FINAL INSTALLATION.

WASHWATER REQUIREMENTS:
 SIZE 1 HI-FLOW SCREEN : SPRAYBAR - 98 GPM @ 45 PSI PER SCREEN. FINAL EFFLUENT QUALITY
 COMPACTORS : 16 GPM @ 25 PSI PER COMPACTOR.

FOR SEQUENCE OF OPERATION REFER TO SEPERATE DOCUMENT "LAKE HAVASU CITY SEQUENCE OF OPERATION"

FOR ELECTRICAL DRIVE INFORMATION REFER TO EWT DOCUMENT "LAKE HAVASU CITY DRIVE LIST"

THIS DRAWING TO BE READ IN CONJUNCTION WITH THE FOLLOWING EIMCO WATER TECHNOLOGIES DRAWINGS.
 EA13295/03 : GENERAL ARR'GT OF SCREEN AND SCREENING HANDLING PLANT. (SECTIONS ON A-A & B-B.)
 EA12810/04 :GENERAL ARR'GT OF SCREEN AND SCREENINGS HANDLING PLANT (SECTIONS ON C-C & D-D.)

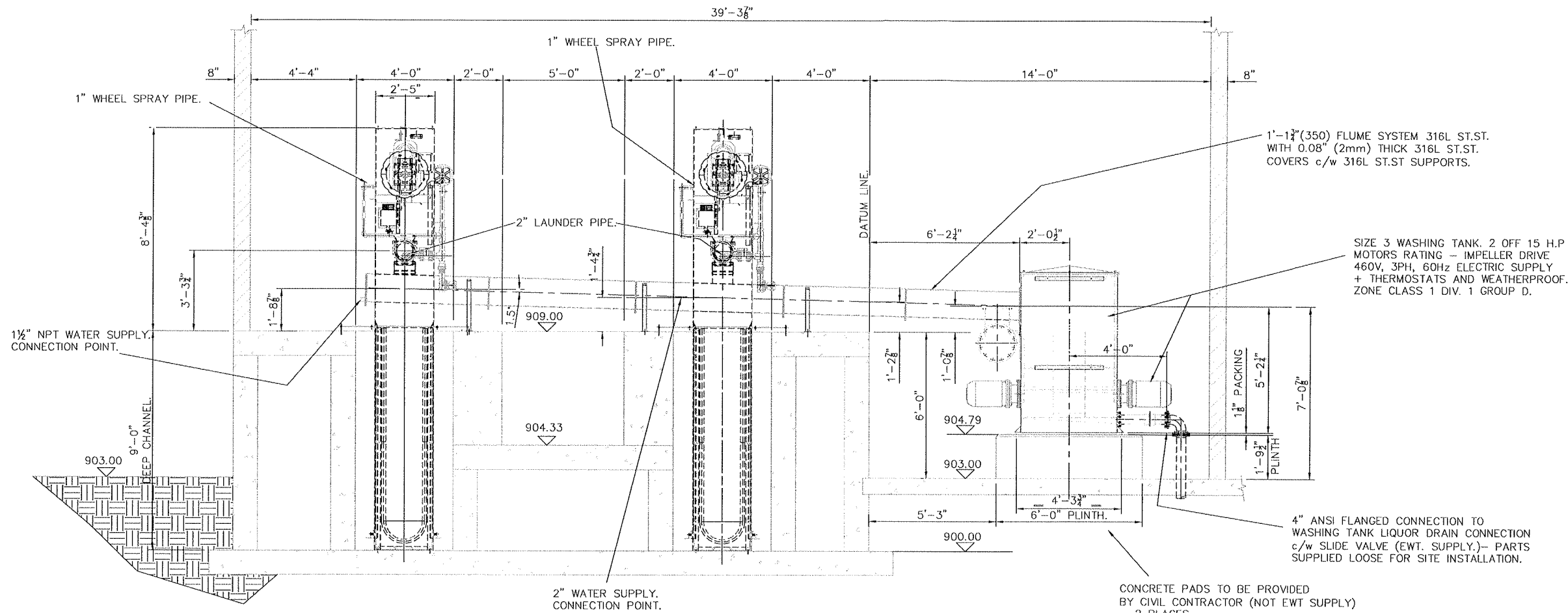
PLAN VIEW

THIS DRAWING IS THE PROPERTY OF DORR OLIVER EIMCO UK Ltd. & MUST NOT BE COPIED OR USED FOR ANY PURPOSE OTHER THAN FOR WHICH IT IS SUPPLIED WITHOUT THE WRITTEN AUTHORITY OF DORR OLIVER EIMCO UK Ltd.
 IF IN DOUBT ASK! DO NOT SCALE
 UNLESS OTHERWISE STATED DIMENSIONS ARE IN INCHES

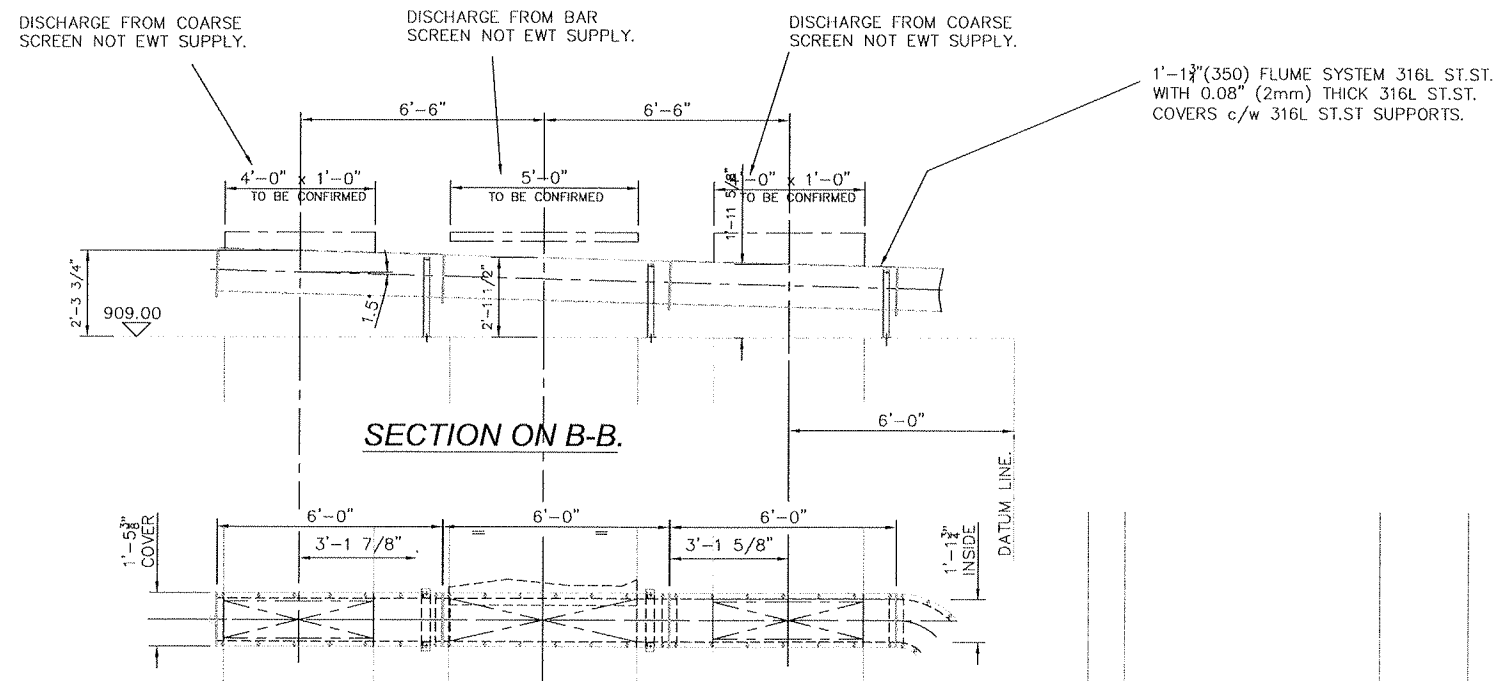
THIS DRAWING IS ON AUTOCAD . DO NOT MODIFY THIS HARD COPY

		TITLE GENERAL ARRANGEMENT OF SCREEN AND SCREENINGS HANDLING PLANT.(PLAN VIEW)	
Eimco Water Technologies. Jones and Attwood Products. 2850 South Decker Lake Drive, Salt Lake City, Utah, 84119 Telephone : (801) 526 2000 Fax : (801) 526 2943		PROJECT/CUSTOMER WILSON & COMPANY	
SCALE 1:30	ORIGINAL DRG SIZE 34" x 22"	DRAWN RC	18.01.06
DIMENSIONS CHKD DP	09.02.06	USED ON LAKE HAVASU CITY	DRG. No. EA13295/02
PROJECTION 	3RD ANGLE PROCESS CHKD AMC	09.02.06	ISSUE No. 0 SHEET No. 1 of 1

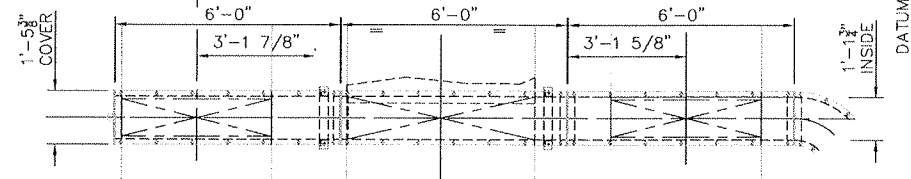
ISS	REVISION NOTES / MOD. No.	DATE	BY



SECTION ON A-A.



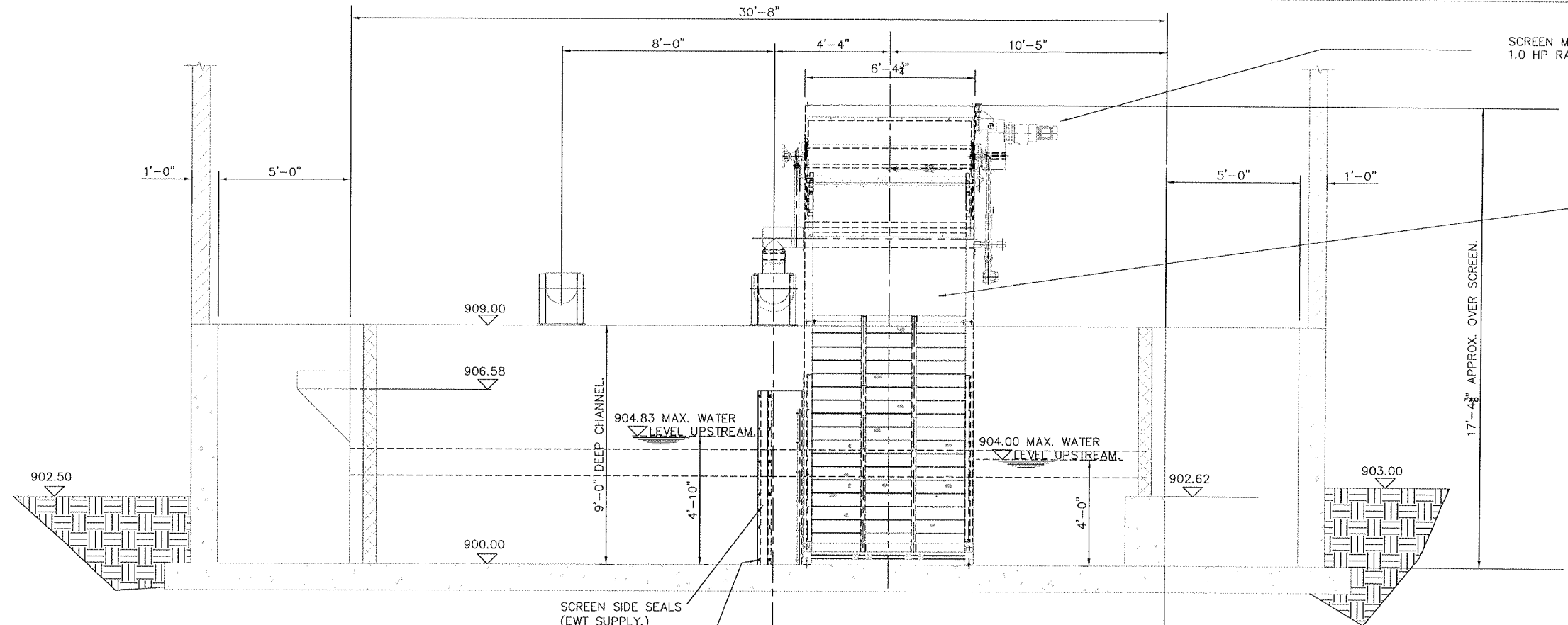
SECTION ON B-B.



PLAN VIEW ON LAUNDER SECTIONS

THIS DRAWING TO BE READ IN CONJUNCTION WITH THE FOLLOWING EIMCO WATER TECHNOLOGIES DRAWINGS.
 EA13295/02 : GENERAL ARR'GT OF SCREEN AND SCREENING HANDLING PLANT. (PLAN VIEW.)
 EA13295/04 : GENERAL ARR'GT OF SCREEN AND SCREENINGS HANDLING PLANT (SECTIONS ON C-C & D-D.)

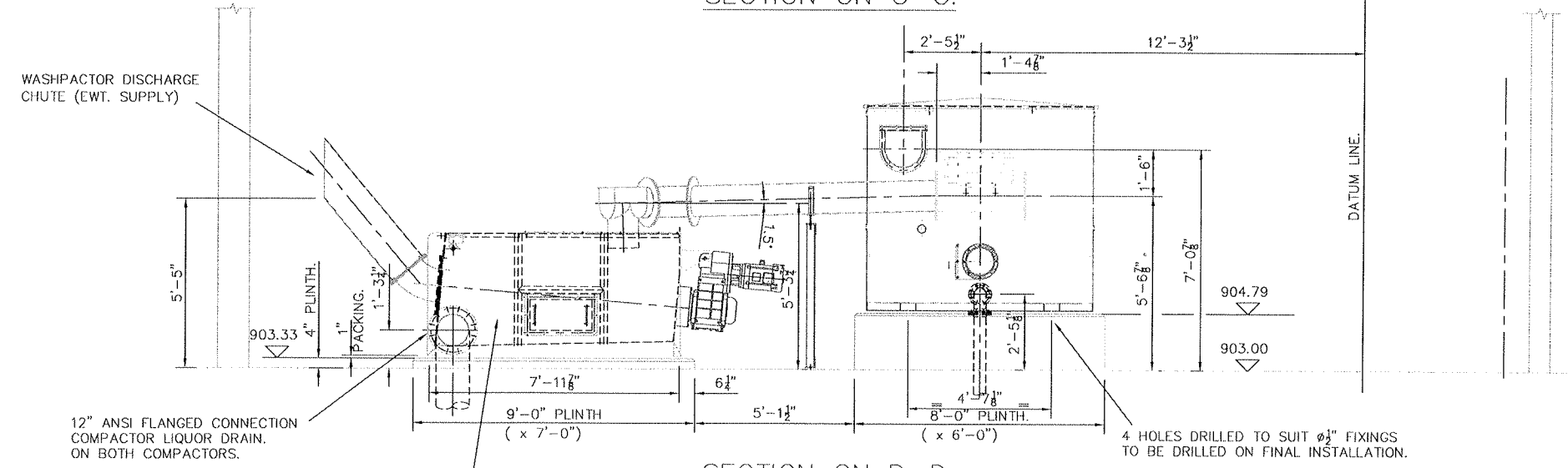
THIS DRAWING IS THE PROPERTY OF DORR OLIVER EIMCO UK Ltd. & MUST NOT BE COPIED OR USED FOR ANY PURPOSE OTHER THAN FOR WHICH IT IS SUPPLIED WITHOUT THE WRITTEN AUTHORITY OF DORR OLIVER EIMCO UK Ltd.		THIS DRAWING IS ON AUTOCAD . DO NOT MODIFY THIS HARD COPY	
<p align="center">EIMCO WATER TECHNOLOGIES</p> <p align="center">Eimco Water Technologies. Jones and Attwood Products. 2850 South Decker Lake Drive, Salt Lake City, Utah, 84119 Telephone : (801) 526 2000 Fax : (801) 526 2943</p>		<p align="center">TITLE GENERAL ARRANGEMENT OF SCREEN AND SCREENINGS HANDLING PLANT.(SECTIONS ON A-A AND B-B.)</p>	
		<p align="center">PROJECT/CUSTOMER WILSON & COMPANY</p>	
<p align="center">SCALE 1:30</p>	<p align="center">ORIGINAL DRG SIZE 34" x 22"</p>	<p align="center">DRAWN RG</p>	<p align="center">USED ON 18.01.06</p>
<p align="center">PROJECTION 3RD ANGLE</p>	<p align="center">DIMENSIONS CHKD DP</p>	<p align="center">PROCESS CHKD AMC</p>	<p align="center">DRG. No. 09.02.06</p>
<p align="center">UNLESS OTHERWISE STATED DIMENSIONS ARE IN INCHES</p>		<p align="center">DRG. No. EA13295/03</p>	
<p>ISS</p>	<p>REVISION NOTES / MOD. No.</p>	<p>DATE</p>	<p>BY</p>
<p align="center">ISSUE No. 0</p>		<p align="center">SHEET No. 1 of 1</p>	



2 No. EWT. SIZE 1. HI-FLOW-S. SCREENS
 5'-8 7/8" (1750) PANEL LENGTH
 2mm APERTURES
 1.0 H.P. SCREEN MAIN DRIVE MOTOR
 460V, 3PH, 60Hz ELECTRIC SUPPLY
 + THERMOSTATS AND WEATHERPROOF.
 ZONE CLASS 1 DIV. 1 GROUP D.

SCREEN SIDE SEALS
 (EWT SUPPLY.)
 6 HOLES #12 FOR EACH SIDE SEAL
 SUITABLE FOR M10 ANCHOR FIXINGS
 HOLES FOR ANCHORS TO BE DRILLED
 ON FINAL INSTALLATION.

SECTION ON C-C.



THIS DRAWING TO BE READ IN CONJUNCTION
 WITH THE FOLLOWING EIMCO WATER TECHNOLOGIES DRAWINGS.
 EA13295/02 : GENERAL ARR'GT OF SCREEN AND SCREENING
 HANDLING PLANT. (PLAN VIEW.)
 EA13295/03 : GENERAL ARR'GT OF SCREEN AND SCREENINGS
 HANDLING PLANT (SECTIONS ON A-A & B-B.)

SECTION ON D-D.

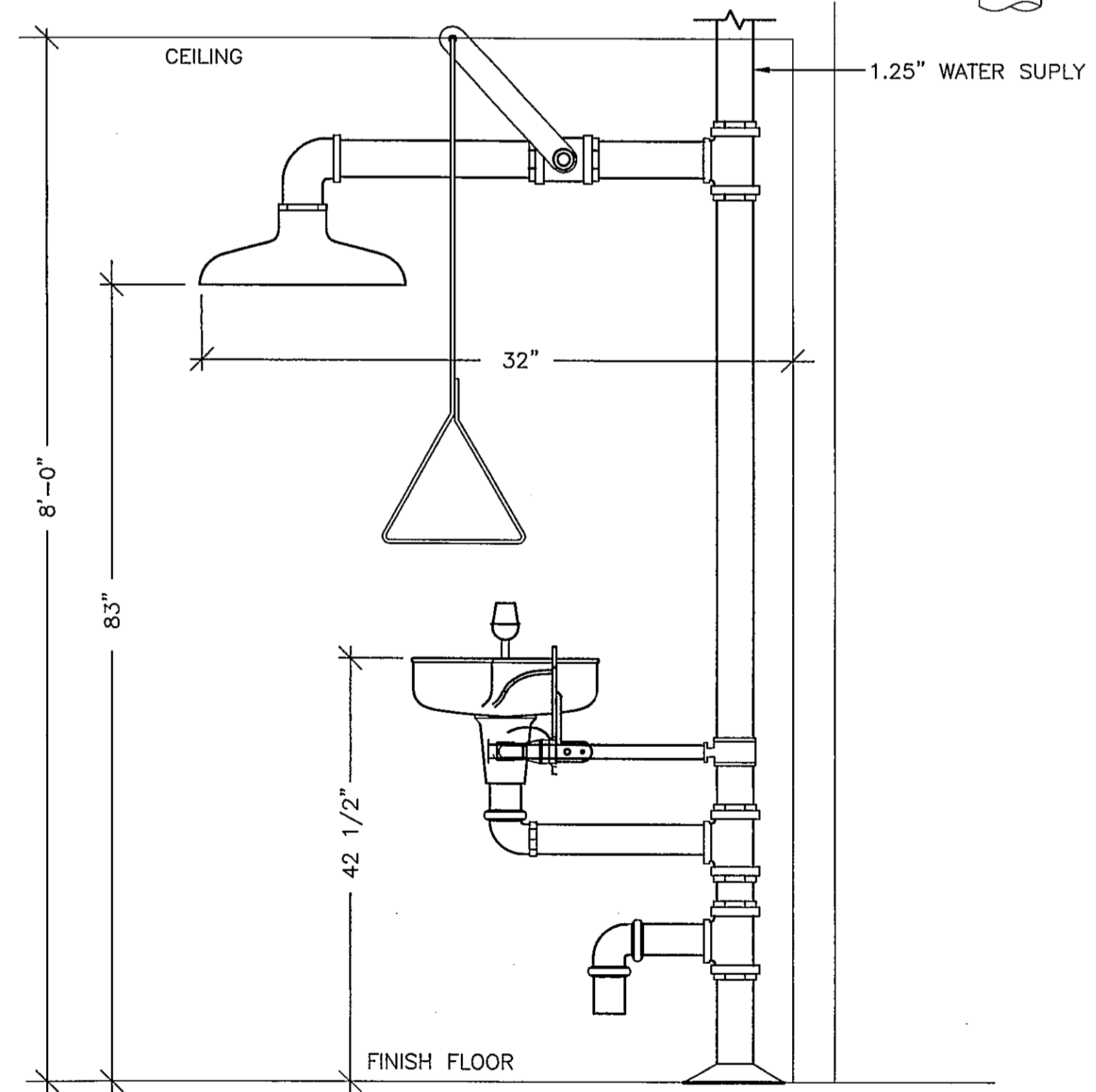
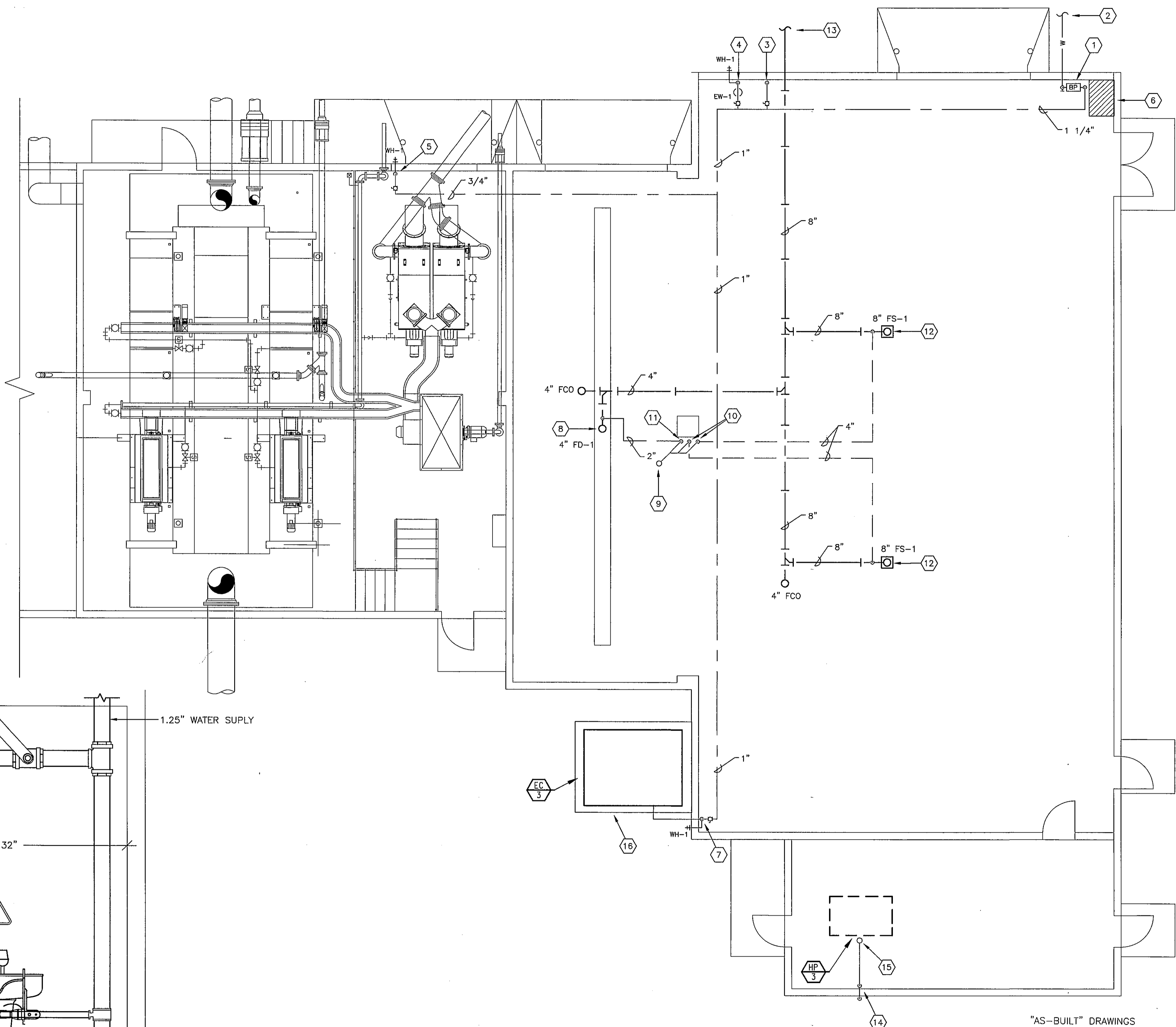
SIZE #500x2000 COMPACTOR
 7.5 H.P. COMPACTOR MOTOR
 460V, 3PH, 60Hz ELECTRIC SUPPLY
 + THERMOSTATS AND WEATHERPROOF
 ZONE CLASS 1. DIV. 1 GROUP D.

CONCRETE PADS TO BE PROVIDED
 BY CIVIL CONTRACTOR (NOT EWT SUPPLY)
 - 2 PLACES

4 HOLES DRILLED TO SUIT #1/2" FIXINGS
 TO BE DRILLED ON FINAL INSTALLATION.

THIS DRAWING IS THE
 PROPERTY OF DORR OLIVER
 EIMCO UK Ltd. & MUST
 NOT BE COPIED OR USED
 FOR ANY PURPOSE OTHER
 THAN FOR WHICH IT IS
 SUPPLIED WITHOUT THE
 WRITTEN AUTHORITY OF
 DORR OLIVER EIMCO UK Ltd.
 IF IN DOUBT ASK!
 DO NOT SCALE.
 UNLESS OTHERWISE STATED
 DIMENSIONS ARE IN INCHES

THIS DRAWING IS ON AUTOCAD . DO NOT MODIFY THIS HARD COPY			
 Eimco Water Technologies. Jones and Attwood Products. 2850 South Decker Lake Drive, Salt Lake City, Utah, 84119 Telephone : (801) 526 2000 Fax : (801) 526 2943		TITLE GENERAL ARRANGEMENT OF SCREEN AND SCREENINGS HANDLING PLANT.(SECTIONS ON C-C AND D-D)	
		PROJECT/CUSTOMER EIMCO WATER TECHNOLOGIES	
SCALE 1:30	ORIGINAL DRG SIZE 34" x 22"	DRAWN CHKD RG DP	18.01.06 09.02.06
PROJECTION 3RD ANGLE	PROCESS CHKD AMC	USED ON WILSON & COMPANY	
ISS REVISION NOTES / MOD. No.		DRG. No. EA13295/04	
DATE		BY	
BY		SHEET No. 1 of 1	



2 EMERGENCY DRENCH SHOWER / EYEWASH
NO SCALE

1 PLUMBING PLAN
3/16" = 1'-0"

KEYED NOTES

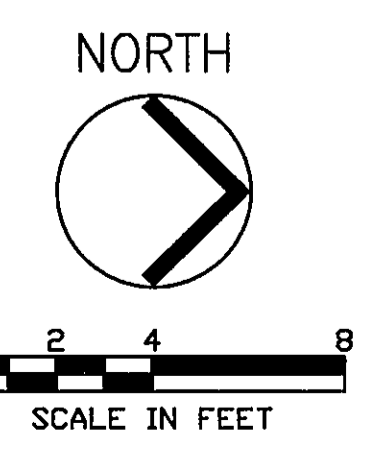
1. 1 1/4" WATER SERVICE UP TO RPZ BACKFLOW PREVENTER.
2. REFER TO SITE PLAN FOR CONTINUATION TO WATER MAIN ON SITE.
3. 1" CW DOWN TO POLYMER FEED SYSTEM. COORDINATE CONNECTION REQUIREMENTS WITH SYSTEM SUPPLIER.
4. 1 1/4" CW DOWN TO EMERGENCY SHOWER AND WALL HYDRANT. SUPPLY 1/4" CW TO SHOWER AND 3/4" CW TO WALL HYDRANT.
5. 3/4" CW DOWN TO WALL HYDRANT.
6. AREA DESIGNATED FOR FIRE SPRINKLER SERVICE. PIPING SIZED BY FIRE SPRINKLER CONTRACTOR.
7. 3/4" CW DOWN ON WALL. SUPPLY 3/4" CW TO EVAPORATIVE COOLING UNIT. CONNECT PER MANUFACTURERS RECOMMENDATIONS. SUPPLY 3/4" CW TO WALL HYDRANT.
8. 4" TRAPPED WASTE UP TO FLOOR DRAIN IN BOTTOM OF TRENCH DRAIN.
9. 4" VENT UP THRU ROOF.
10. 4" VENT DOWN. HOLD TIGHT TO COLUMN.
11. 2" VENT DOWN. HOLD TIGHT TO COLUMN.
12. 8" TRAPPED WASTE UP TO UP TO FLOOR SINK.
13. REFER TO SITE PLAN FOR CONTINUATION.
14. 1" CONDENSATE DRAIN DOWN. EXIT AT BASE OF WALL AND DISCHARGE TO ROOF DRAIN SPLASH BLOCK.
15. 1" CONDENSATE DRAIN UP TO ROOFTOP HEAT PUMP.
16. REFER TO STRUCTURAL DETAIL S19-4 FOR EQUIPMENT PAD.

GENERAL NOTES

1. COORDINATE COLD WATER ROUTING WITH STRUCTURE AND PROCESS EQUIPMENT.

"AS-BUILT" DRAWINGS
This drawing was modified to reflect construction revisions based on the records kept and provided by the Contractor.

Finished as-built measurements and elevations were not obtained by the Engineer. All information reported must be verified by site measurements.
ENGINEER: *[Signature]*
DATE: 4/20/08
WILSON ENGINEERS, LLC
Phoenix, Arizona



In Association with
MALCOLM PIRNIE

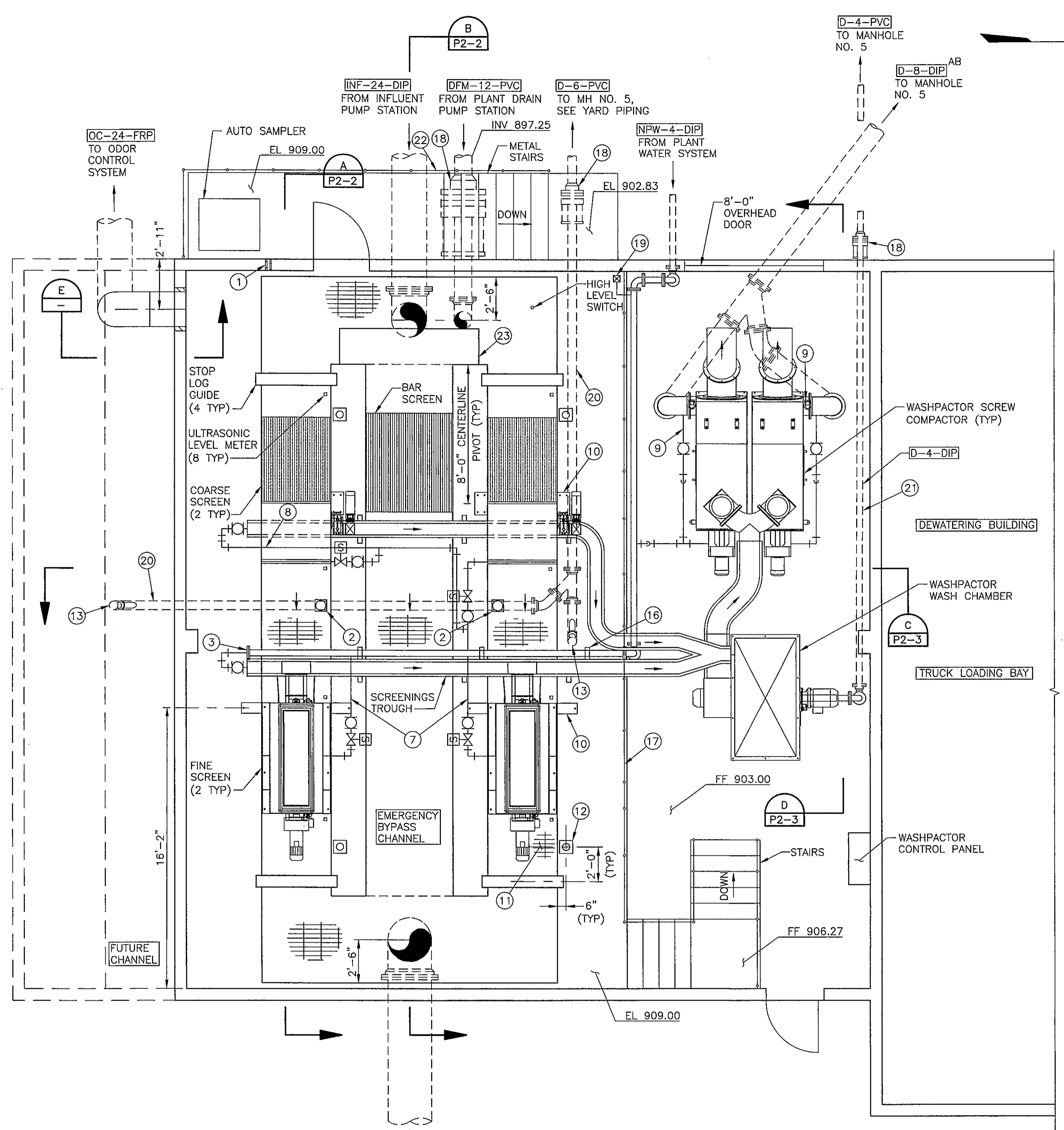
WILSON & COMPANY
9633 South 48th Street, Suite 290
Phoenix, Arizona 85044-5658
Phone: (480) 893-8860

LAKE HAVASU CITY, ARIZONA
NORTH REGIONAL WASTEWATER TREATMENT PLANT
SCREENS / DEWATERING BUILDING
PLUMBING PLAN
CITY PROJECT NO. SS1860
WCEA NO. X4001

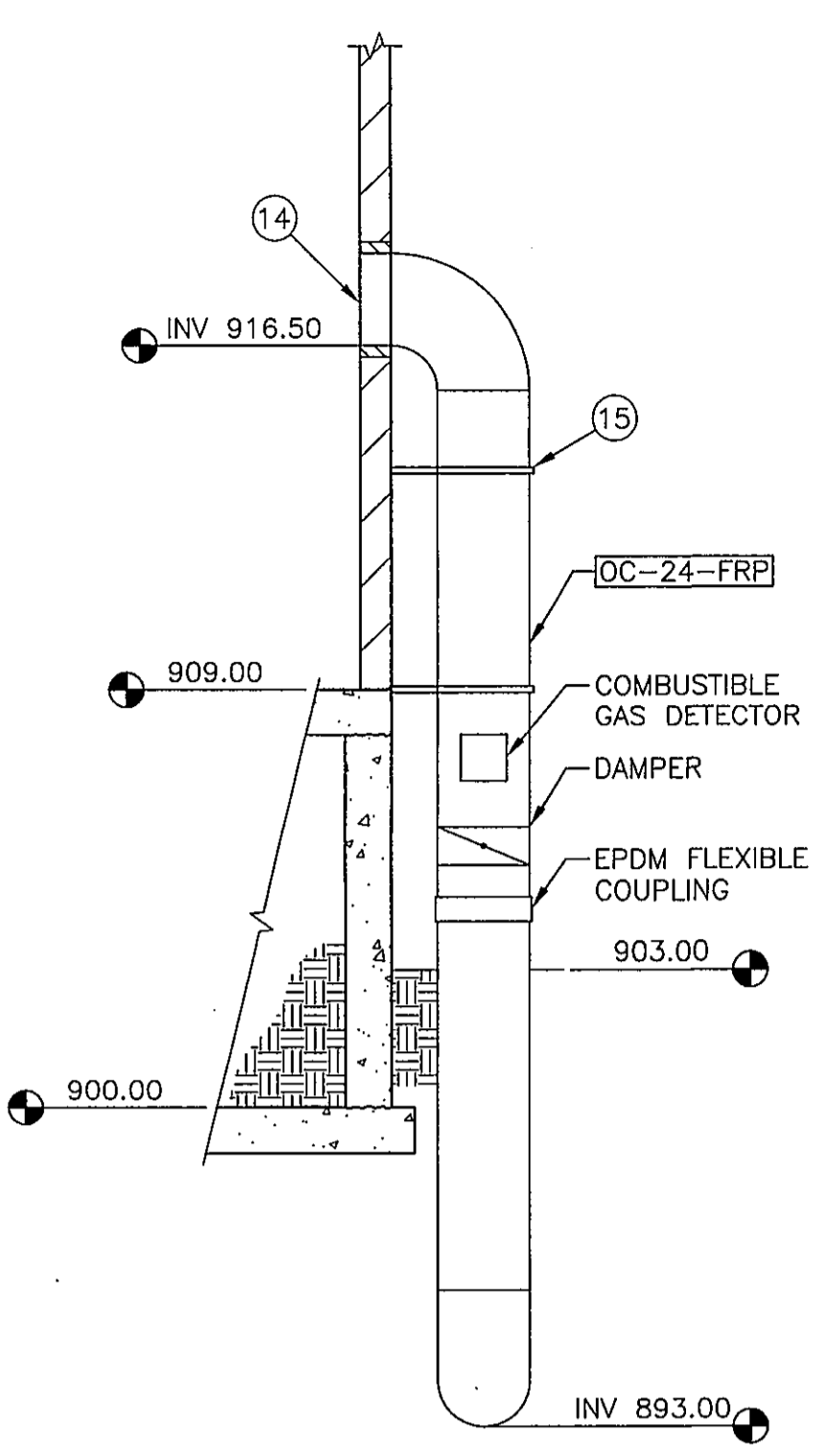
Design:	MWW	Drawn:	MWW	Checked:	MWW
Date:	4/05	WCEA Project No.:	X4001		
Revision		Description		By	



XREF: 4001D167, WWPSPSTIE & TB-X4001



PLAN
SCALE: 1/4"=1'-0"



SECTION
SCALE: 1/4"=1'-0"

KEYED NOTES

- ① 2" PVC SLEEVE IN WALL FOR AUTO SAMPLER TUBING
- ② MUD VALVE AND COVER PER DETAIL 144 (TYP)
- ③ BLIND FLANGE
- ④ NOT USED
- ⑤ WALL PENETRATION PER DETAIL 105
- ⑥ PIPE HANGER PER DETAIL 131 AT 6'-0"
- ⑦ 1 1/2" SCHEDULE 80 PVC NON-POTABLE WATER LINE TO SCREEN, CONNECTIONS TO BE MADE PER MANUFACTURER'S RECOMMENDATIONS WITH ENGINEER'S APPROVAL REGARDING ROUTING (TYP)
- ⑧ 3/4" SCHEDULE 80 PVC NON-POTABLE WATER LINE TO SCREENINGS TROUGH (TYP)
- ⑨ 1/2" SCHEDULE 80 PVC NON-POTABLE WATER LINE TO SCREW COMPACTOR, CONNECTIONS TO BE MADE PER MANUFACTURER'S RECOMMENDATIONS
- ⑩ SCREEN MANUFACTURER TO SUBMIT DESIGN OF ANCHOR SYSTEM FOR APPROVAL BY ENGINEER PRIOR TO FABRICATION (TYP)
- ⑪ CONTRACTOR TO COORDINATE WITH MANUFACTURER FOR CLEARANCE BETWEEN SCREENS AND GRATING (TYP)
- ⑫ DAWIT CRANE MOUNT (TYP) CONTRACTOR TO VERIFY LOCATIONS OF DAWIT CRANE MOUNT IN RELATION TO STOP LOG LOCATIONS WITH CRANE MANUFACTURER PRIOR TO INSTALLATION
- ⑬ CLEANOUT PER LHC STANDARD DETAIL 9
- ⑭ 12" AFF COVER OPENING WITH 1/2" BIRD SCREEN
- ⑮ VERTICAL SWAY BRACE PER DETAIL 139, TWO PLACES MINIMUM
- ⑯ FLUSH MOUNT PIPE SUPPORT PER DETAIL 126 (TYP)
- ⑰ HANDRAIL PER DETAIL 108 (TYP)
- ⑱ PVC TO DIP/PE ADAPTER (TYP)
- ⑲ WALL MOUNTED YARD HYDRANT PER DETAIL 120
- ⑳ 6" DRAIN, SLOPE AT 0.04 FT/FT
- ㉑ 4" DRAIN, SLOPE AT 0.04 FT/FT
- ㉒ TRANSITION FROM STEEL HANDRAIL TO ALUMINUM HANDRAIL AT TOP OF STAIRS
- ㉓ 8'-0"x 2'-0"x 8" FRP OVERFLOW WEIR AND SUPPORT

"AS-BUILT" DRAWINGS
This drawing was modified to reflect construction revisions based on the records kept and provided by the Contractor.

Finished as-built measurements and elevations were not obtained by the Engineer. All information reported must be verified by site measurements.
ENGINEER: *[Signature]*
DATE: 4/20/08
WILSON ENGINEERS, LLC
Phoenix, Arizona

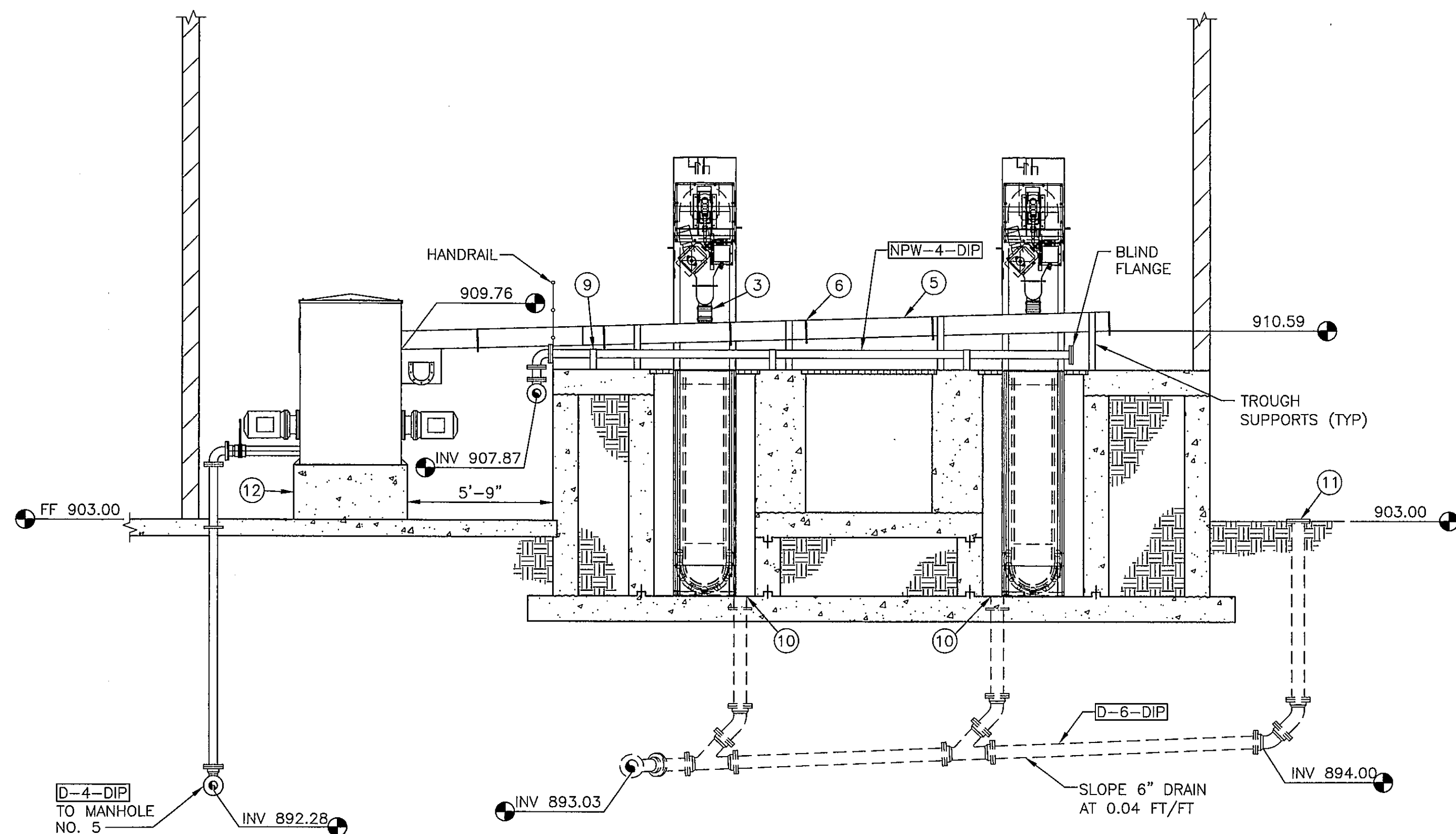
In Association with
**MALCOLM
PIRRIE**

**WILSON
ENGINEERS**
9633 South 48th Street, Suite 290
Phoenix, Arizona 85044-5658
Phone: (480) 893-8860

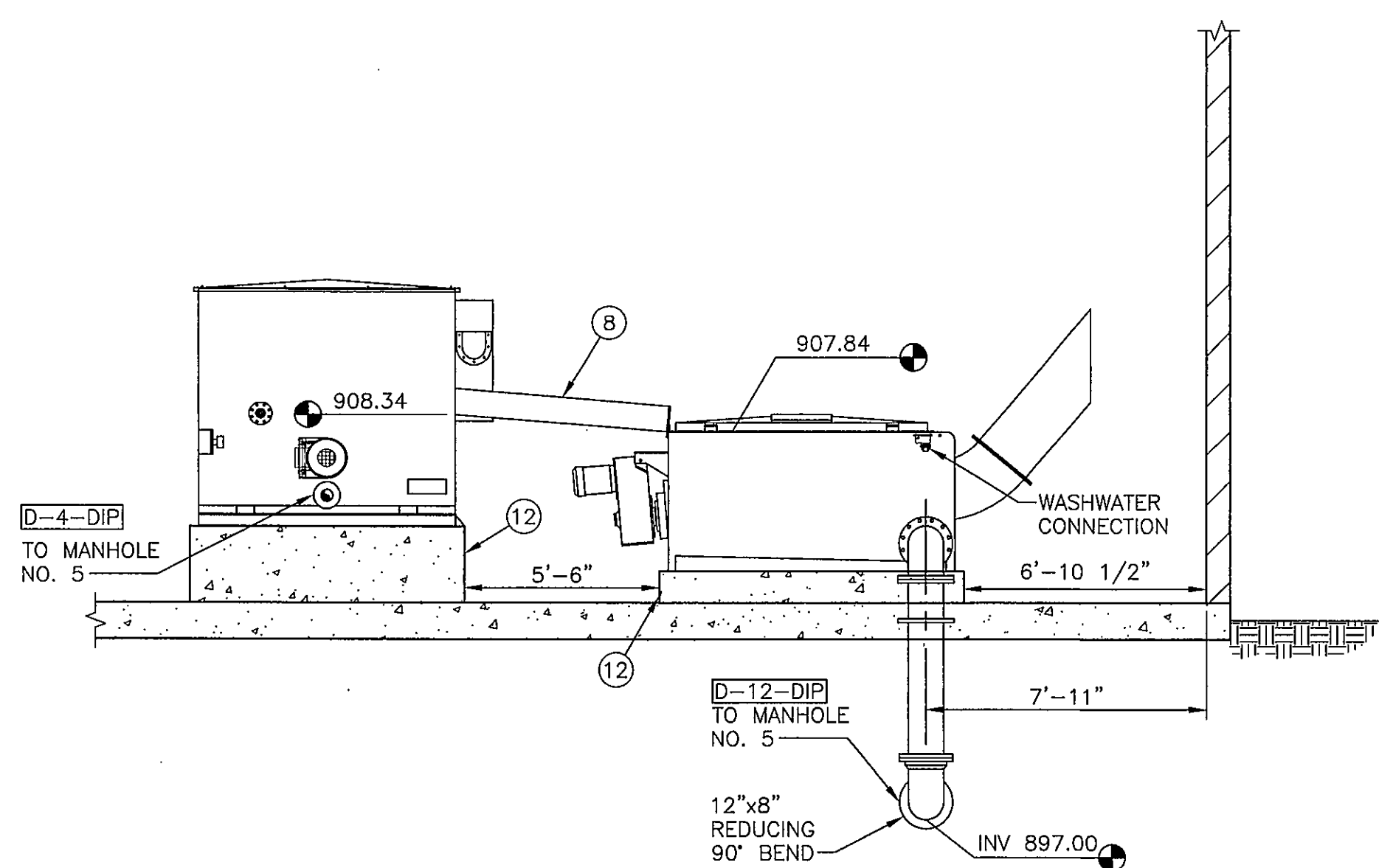
LAKE HAVASU CITY, ARIZONA
NORTH REGIONAL WASTEWATER TREATMENT PLANT
SCREENS BUILDING PLAN
CITY PROJECT NO. SS1860
WCEA NO. X4001

Design:	MLA	Drawn:	KJG	Checked:	
Date:	7/05	WCEA Project No.:	X4001		
Revision	2	Description	ADDENDUM NO. 2	By	WJL
			AS-BUILT		MLA

THE ORIGINAL DESIGN DRAWING FOR THIS WORK WAS SEALED ON 1/20/2008 BY UDAY K. GANDHE, A REGISTERED PROFESSIONAL CIVIL ENGINEER IN THE STATE OF ARIZONA, REGISTRATION NO. 30185



SECTION C
SCALE: 1/4"=1'-0" P2-1



SECTION D
SCALE: 1/4"=1'-0" P2-1

KEYED NOTES

- ① STOP LOG GUIDE (TYP)
- ② STOP LOG ACCESS COVER PER DETAIL 153 (TYP)
- ③ NEOPRENE BOOT, LENGTH AS REQUIRED (TYP)
- ④ 1" WIDE 316 SS BAND CLAMP (TYP)
- ⑤ 316 SS SCREENING TROUGH, SLOPE AT 0.03 FT/FT MINIMUM
- ⑥ SCREENING TROUGH FLANGES WITH NEOPRENE GASKET (TYP)
- ⑦ 3/8"x2" ALUMINUM BARS SPACED AT 3" CENTER TO CENTER
- ⑧ 316 SS SCREENING TROUGH, SLOPE AT 0.08 FT/FT MINIMUM
- ⑨ FLUSH MOUNT PIPE SUPPORT PER DETAIL 126 (TYP)
- ⑩ 6" MUD VALVE PER DETAIL 144
- ⑪ CLEANOUT PER LHC STANDARD DETAIL 9
- ⑫ EQUIPMENT SUPPORT PAD PER DETAIL 6 SHEET S19-1, ADJUST PAD HEIGHT TO MATCH EQUIPMENT ELEVATIONS AS SHOWN

"AS-BUILT" DRAWINGS
This drawing was modified to reflect construction revisions based on the records kept and provided by the Contractor.

Finished as-built measurements and elevations were not obtained by the Engineer. All information reported must be verified by site measurements.

ENGINEER: *[Signature]*
DATE: 4/30/08
WILSON ENGINEERS, LLC
Phoenix, Arizona

In Association with
**MALCOLM
PIRRIE**

**WILSON
ENGINEERS**
9633 South 48th Street, Suite 290
Phoenix, Arizona 85044-5658
Phone: (480) 893-8860

LAKE HAVASU CITY, ARIZONA
NORTH REGIONAL WASTEWATER TREATMENT PLANT
SCREENS BUILDING SECTIONS
CITY PROJECT NO. SS1860
WCEA NO. X4001

Design:	MLA	Drawn:	KJG	Checked:	
Date:	7/05	WCEA Project No.:	X4001		
Revision	9/05	Description	ADDENDUM 2	By	WLJ
Δ					

THE ORIGINAL DESIGN DRAWING FOR THIS WORK WAS SEALED ON 1/20/2008 BY UDAY K. GANDHE, A REGISTERED PROFESSIONAL CIVIL ENGINEER IN THE STATE OF ARIZONA, REGISTRATION NO. 30185

NOTE:
VERIFY SIZE & LOCATION OF ALL OPENINGS IN CONCRETE
SLABS/WALLS WITH ALL OTHER DISCIPLINES PRIOR TO
START OF CONSTRUCTION

NOTE:
CONTRACTOR TO COORDINATE OPENING
DIMENSIONS, TRACK EMBEDMENTS, GROUT SOCKETS AT
SLUICE GATES & OPERATOR PENETRATIONS w/ APPROVED
GATE MFR SHOP DWGS PRIOR TO FABRICATION SEE
TYPICAL DETAILS ON SHIT S 19-3 FOR REINF

NOTE:
FOR SITE LOCATION, PIPE PENETRATIONS,
HANDRAIL LOCATIONS &
CONCRETE FILLS (FILLET, ETC)
SEE P DWGS

NOTE:
FOR TYPICAL CONSTRUCTION JOINTS
SEE TYPICAL DETAILS ON DWG S 19-1

NSB Nabar Stanley Brown, Inc.
Consulting Structural Engineers
2150 East Highland Avenue, Suite #204
Phoenix, Arizona 85016-4721
tel (602)912-9191 fax (602)912-9686

In Association with
MALCOLM PIRNIE

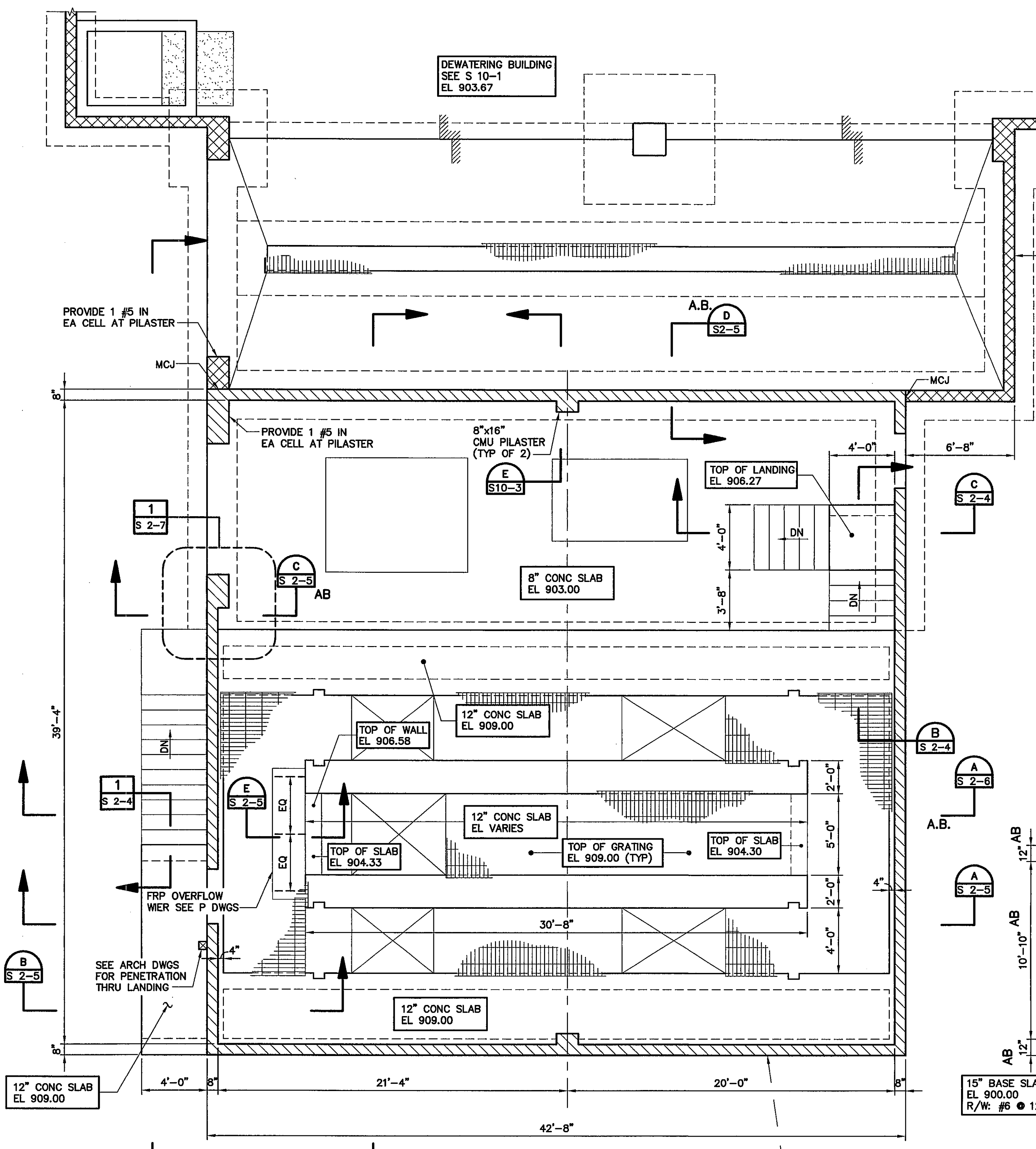
WILSON ENGINEERS
9633 South 48th Street, Suite 290
Phoenix, Arizona 85044-5658
Phone: (480) 893-8860

LAKE HAVASU CITY, ARIZONA
NORTH REGIONAL WASTEWATER TREATMENT PLANT
SCREEN BUILDING
PLANS
CITY PROJECT NO. SS1860
WCEA NO. X4001

Design:	SUN	Drawn:	A/E	Checked:	BMM
Date:	07/05	WCEA Project No.:	X4001		
Revision:		Description:	AS-BUILT	By:	SUN
		Date:	4/08		

THIS DRAWING WAS
ORIGINALLY SEALED ON
7/5/05
SATEESH J. NABAR
PROFESSIONAL
ENGINEER (STRUCTURAL)
IN ARIZONA
REGISTRANT NO. 21877

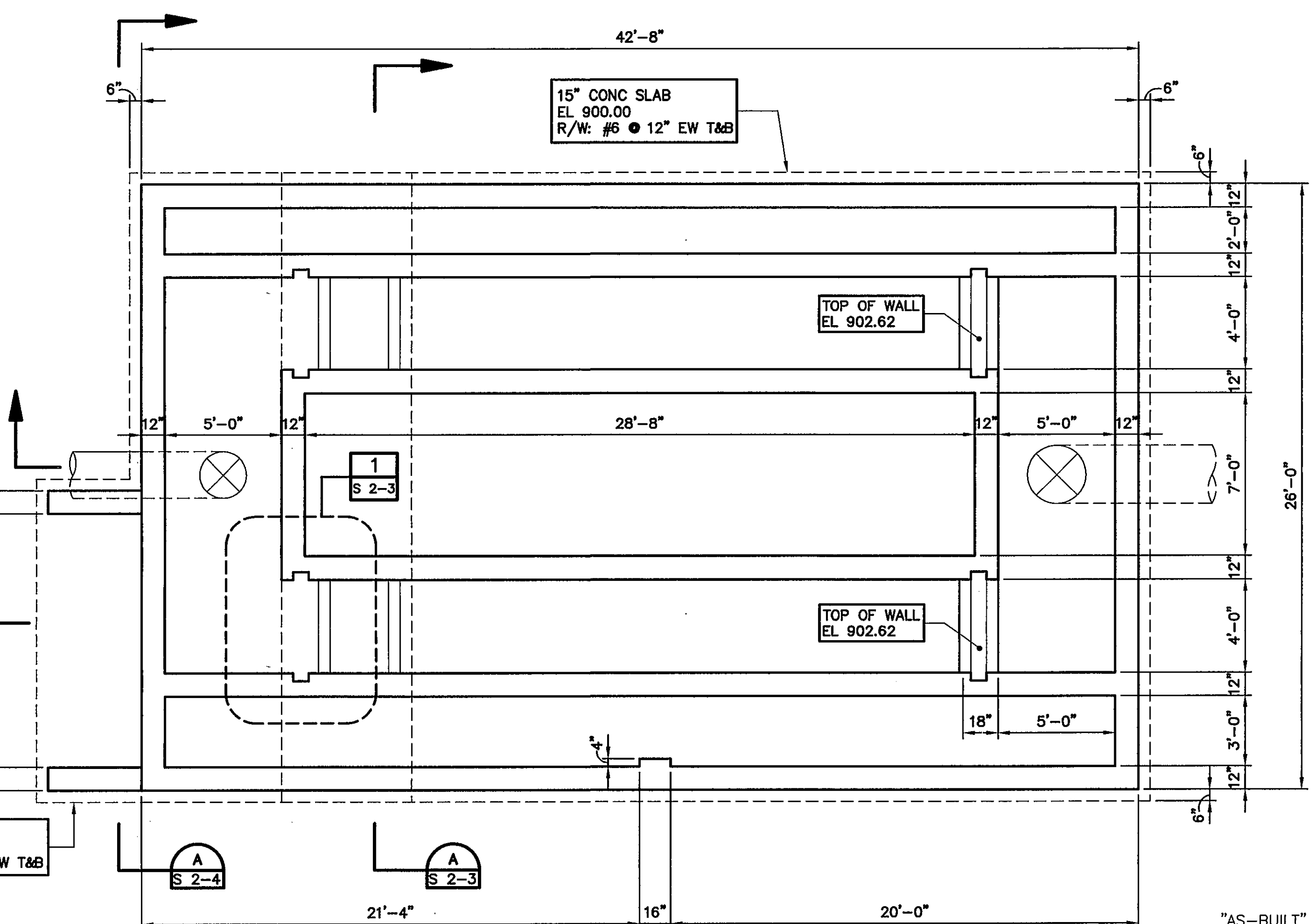
Sheet No. S 2-1



SCREENS BUILDING
PLAN AT EL 909.00
SCALE: 1/4"=1'-0"

TYPICAL 8" CMU WALL (UNO)
R/W: #5 @ 16" VERT IN
SOLID GROUTED
2 #5 CONT HORIZ IN
8" BOND BEAM
● - 8'-0" A.F.F.
- DOOR & WINDOW HEADS
- ROOF LEVEL
- TOP OF PARAPET
PROVIDE STD JOINT REINF @ 16"
LAP JOINT REINF 12" (MIN)
SHOWN THUS, [diagonal hatching]

TYPICAL 8" CMU WALL (UNO)
R/W: #5 @ 8" VERT IN
SOLID GROUTED
2 #5 CONT HORIZ IN
8" BOND BEAM
● - 8'-0" A.F.F.
- DOOR & WINDOW HEADS
- ROOF LEVEL
- TOP OF PARAPET
PROVIDE STD JOINT REINF @ 16"
LAP JOINT REINF 12" (MIN)
SHOWN THUS, [diagonal hatching]



SCREENS BUILDING
FOUNDATION PLAN
SCALE: 1/4"=1'-0"

"AS-BUILT" DRAWINGS
This drawing was modified to
reflect construction revisions
based on the records kept and
provided by the Contractor.

Finished as-built measurements
and elevations were not obtained
by the Engineer. All information
reported must be verified by
site measurements.
ENGINEER: [Signature]
DATE: 05/06/08
WILSON ENGINEERS, LLC
Phoenix, Arizona